

## (14th/11/2017 New)100% Real Exam Questions-Braindump2go 70-697 Dumps PDF and VCE 215Q Download(92-102)

2017 November New 70-697 Exam Dumps with PDF and VCE Free Updated Today! Following are some new 70-697 Questions:

1. |2017 New 70-697 Exam Dumps (PDF & VCE) 215Q&As Download:<https://www.braindump2go.com/70-697.html>2. |2017 New 70-697 Exam Questions & Answers Download:

<https://drive.google.com/drive/folders/0B75b5xYLjSSNUFOeVNOSmo1VIE?usp=sharing>  
QUESTION 92 Drag and Drop Question  
A local printer named PRINTER1 is shared from a client computer named COMPUTER1 that run a 32-bit version of Windows 10. A workgroup contains client computers that run a 64-bit version of Windows 10. Computers in the workgroup can't currently print to PRINTER1. You need to ensure that the workgroup computers can print to PRINTER1. Which three actions should you perform in sequence?

Connect the workgroup computers to PRINTER1.  
Add the driver on COMPUTER1.  
Obtain the 32-bit driver for PRINTER1.  
Obtain the 64-bit driver for PRINTER1.  
Install the driver on one computer in the workgroup.

Answer:

Obtain the 64-bit driver for PRINTER1.  
Add the driver on COMPUTER1.  
Install the driver on one computer in the workgroup.

Explanation: You can very well add a 64-bit printer driver to a local printer on a 32-bit Windows operating system. After the 64-bit driver has been added connect the 64-bit Windows 10 computers to the printer. Incorrect Answers: \* There is no need for a 32-bit driver. We need a 64-bit driver. \* We should add, not install, the driver on the computer which is attached to the printer.

<https://support.microsoft.com/en-us/kb/3041911>  
QUESTION 93 Hotspot Question  
You plan to use a Group Policy to configure the power settings of several laptops. You need to ensure that the laptops meet the following requirements: - Enter hibernation mode when the lid is closed. - Enter sleep mode when the battery level is critical. Which two Power Management Group Policy settings should you modify? To answer, select the appropriate settings in the answer area.

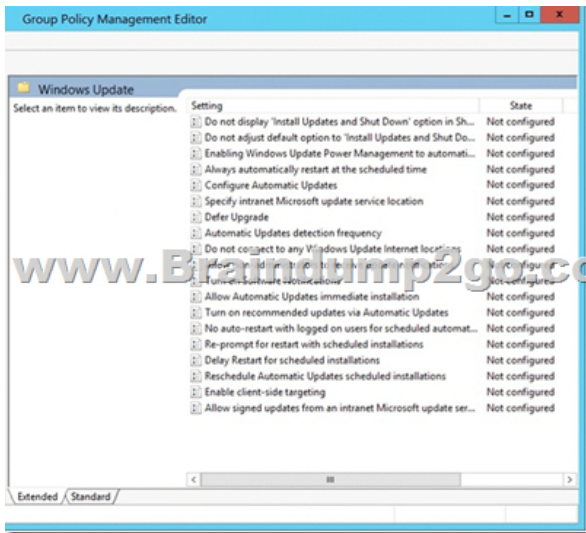
Power Management  
Button Settings  
Hibernation Settings  
Sleep Settings  
Video and Display Settings

Answer:

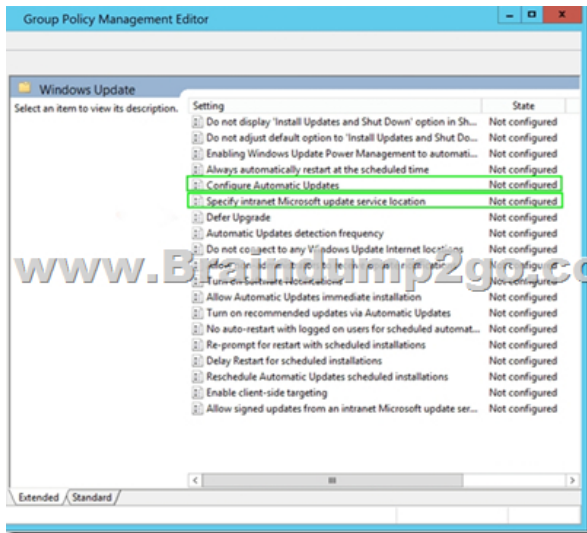
Power Management  
Button Settings  
Hibernation Settings  
Sleep Settings  
Video and Display Settings

QUESTION 94 You administer Windows 10 Enterprise client computers in your company network. You change settings on a reference computer by using the Windows Firewall with Advanced Security tool. You want to apply the same settings to other computers. You need to save the Windows Firewall with Advanced Security configuration settings from the reference computer. You also need to be able to import the configuration settings into a Group Policy object later. What should you do?  
A. Open Local Group Policy Editor, select the Windows Firewall with Advanced Security node, and select the Export Policy action.  
B. Run the netsh advfirewall export c:\settings.wfw command.  
C. Run the netsh firewall export c:\settings.xml command.  
D. Run the netsh advfirewall export c:\settings.xml command.  
Answer: A  
QUESTION 95 A company has Windows 10 Enterprise computers in an

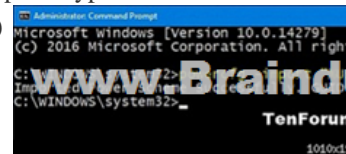
Active Directory Domain Services (AD DS) domain. A computer named COMPUTER1 has a shared printer named PRINTER1 installed and has Remote Desktop enabled. A user named Intern is a member of a security group named Sales. The Sales group is a member of the Remote Desktop Users group on COMPUTER1. Only the Sales group has access to PRINTER1. You need to configure COMPUTER1 to meet the following requirements:- Allow only Intern to establish Remote Desktop connections to COMPUTER1.- Allow Intern to print to PRINTER1. What should you do? A. Assign Intern the Deny log on user right by using the Remote Desktop Services user right. B. Assign Intern the Deny access to this computer from the network user right. Assign the Sales group the Allow log on locally user right. C. Remove Intern from the sales group. D. Remove the Sales group from the Remote Desktop Users group and add Intern to the Remote Desktop Users group. Answer: D QUESTION 96 Note: This question is part of a series of questions that use the same or similar answer choices. An answer choice may be correct for more than one question in the series. Each question is independent of the other questions in this series. Information and details provided in a question apply only to that question. You have an application named app1 installed on computer named Computer1. Computer1 runs Windows 10. App1 saves data to %UserProfile%\App1Data. You need to ensure that you can recover the App1 data if Computer1 fails. What should you configure? A. share permissions B. application control policies C. Encrypting File System (EFS) settings D. NTFS permissions E. HomeGroup settings F. Microsoft OneDrive G. Software restriction policies H. Account policies Answer: F QUESTION 97 You are the network administrator for Contoso, Ltd. Many users have Windows 10 Enterprise laptops, and your IT department configures all of the to use BitLocker on all fixed drives. Many users carry sensitive corporate data on their USB drives. You need to enable BitLocker for these USB drives. Which key protector option should you use? A. a smartcard B. a startup key C. TPM+PIND. TPM+Password Answer: D Explanation: <https://www.groovypost.com/howto/use-bitlocker-encryption-windows-10/> QUESTION 98 You administer Windows 10 Enterprise client computers in your company network. A user reports that her Internet connection is slower than usual. You need to identify the Process Identifiers (PIDs) of applications that are making connections to the Internet. Which command should you run? A. netstat -an B. jpcfg /showclassid C. netstat -o D. netsh set audit-logging E. netsh show netdlls Answer: C Explanation: <http://technet.microsoft.com/en-us/library/bb490947.aspx> Netstat Displays active TCP connections, ports on which the computer is listening, Ethernet statistics, the IP routing table, IPv4 statistics (for the IP, ICMP, TCP, and UDP protocols), and IPv6 statistics (for the IPv6, ICMPv6, TCP over IPv6, and UDP over IPv6 protocols). Used without parameters, netstat displays active TCP connections. Syntax netstat [-a] [-e] [-n] [-o] [-p Protocol] [-r] [-s] [Interval] Parameters -a : Displays all active TCP connections and the TCP and UDP ports on which the computer is listening. -n : Displays active TCP connections, however, addresses and port numbers are expressed numerically and no attempt is made to determine names. -o : Displays active TCP connections and includes the process ID (PID) for each connection. You can find the application based on the PID on the Processes tab in Windows Task Manager. This parameter can be combined with -a, -n, and -p. Further Information: netstat -an - there is no "an" parameter <http://technet.microsoft.com/en-us/library/cc940124.aspx> QUESTION 99 Your network contains an Active Directory domain. The domain contains 100 computers that run Windows 10. You plan to develop a line-of-business application and to deploy the application by using Windows Store for Business. You need to ensure that users can see the private store of your company when they sign in to the Windows Store for Business. What should you do first? A. Provision a Windows Dev Center dev account for each user. B. Assign the Windows Store Purchaser role to each user. C. Assign the Windows Store Admin role to each user. D. Provision a Microsoft Azure Active Directory (Azure AD) account for each user. E. Provision a Microsoft account for each user. Answer: D Explanation: <https://www.sepago.de/blog/2016/02/18/windows-10-enterprise-serie-windows-business-store> QUESTION 100 Hotspot Question You have an Active Directory domain. All of the client computers in the domain run Windows 10 Enterprise. You need to configure the client computers to download updates from a Windows Server Update Service server. Which two settings should you configure? To answer, select the appropriate settings in the answer area.



Answer:



QUESTION 101 Your company has a standard power scheme for the sales team. You are replacing a laptop for a sale associate. You import the power scheme onto the new laptop. You need to apply the power scheme. What should you do?  
 A. Modify the power scheme under Power and Sleep settings.  
 B. Run the `gpubdate /F` command.  
 C. Run the `powercfg /S` command.  
 D. Modify the advanced power settings.  
 Answer: C  
 Explanation: To Import a Power Plan1. Open an elevated command prompt. 2. Type the command below into the command prompt, and press Enter to export the power plan. (see screenshot below)



<http://www.tenforums.com/images/smilies/arrow.png> `powercfg -import "Full path of .pow file"` Note Note Substitute Full path of .pow file in the command above with the actual full path of the .pow file of the power plan you exported in Option One. For example: `powercfg -import "%UserProfile%\DesktopPowerPlanBackup.pow"` Click image for larger version. Name: Import\_Power\_Plan.png Views: 43 Size: 17.9 KB ID: 687384. When finished, you can close the command prompt if you like. 5. Users on the PC will now be able to select the imported power plan as their active power plan.

QUESTION 102 All client computers in a company's network environment run Windows 10 Enterprise. A client computer has drives that are configured as shown in the following table.

Drive	Location	Type
C:	Internal	Dynamic
D:	Internal	Dynamic
E:	Internal	Optical
F:	External	Basic
Z:	Network	Mapped

You are choosing a backup destination for drive C. You have the following requirements:- Ensure that the backup file is available if drive C: fails.- Ensure that the backup file can be accessed by other computers on the network.- Support the storage of multiple versions of system image backups. You need to select a backup destination that meets the requirements. Which destination should you select? A. drive D: B. drive F: C. drive E: D. drive Z: Answer: B!!!RECOMMEND!!!1. | 2017 New 70-697 Exam Dumps (PDF & VCE) 215Q&As Download: <https://www.braindump2go.com/70-697.html> 2. | 2017 New 70-697 Study Guide Video: YouTube Video: [YouTube.com/watch?v=lvar3kxnfo4](https://www.youtube.com/watch?v=lvar3kxnfo4)