

[FREE] Braindump2go 70-659 PDF Exam Dumps Download (121-130)

MICROSOFT NEWS: 70-659 Exam Questions has been Updated Today! Get Latest 70-659 VCE and 70-659 PDF Instantly! Welcome to Download the Newest Braindump2go 70-659 VCE&70-659 PDF Dumps:

<http://www.braindump2go.com/70-659.html> (161 Q&As) Real Latest 70-659 Exam Questions Updated By Official Microsoft Exam Center! Braindump2go Offers 70-659 Dumps sample questions for free download now! You also can visit our website, download our premium Microsoft 70-659 Exam Real Answers, 100% Exam Pass Guaranteed! Exam Code: 70-659 Exam Name: TS: Windows Server 2008 R2, Server Virtualization Certification Provider: Microsoft [70-659 Dumps](#), [70-659 Book](#), [70-659 Study Guide PDF](#), [70-659 eBook](#), [70-659 Braindump](#), [70-659 eBook](#), [70-659 Exam Questions](#), [70-659 Exam Prep](#), [70-659 Dumps PDF](#), [70-659 Dumps Free](#), [70-659 Latest Dumps](#), [70-659 Practice Exam](#), [70-659 Practice Questions](#), [70-659 PDF](#), [70-659 VCE](#)

TS: Windows Server 2008 R2



Product Description
Exam Number
TS: Windows Server 2008 R2, Server Virtualization Certification. With this exam, you will be able to take the exam, and you will receive your successful results.

Free Demo Download
Braindump2go offers a free demo download of the exam questions and answers. You can download the exam questions and answers before you purchase the full exam.

Questions and Answers : 161 Q&As
Updated: Dec 22, 2015
~~\$429.99~~ **\$99.99**
[PDF DEMO](#)
[CHECK OUT](#)
 Printable PDF

QUESTION 121 You are configuring a Windows Server 2008 R2 Hyper-V failover cluster. You configure five iSCSI logical unit numbers (LUNs) on shared storage, and you present them to the first server. Each LUN appears twice in the Disk Management console. You need to ensure that each LUN appears only once in the Disk Management console. What should you do? A. Reset the iSCSI initiator name to the default name. B. Install and configure Microsoft Multipath I/O (MPIO). C. In the Disk Management console, rescan the disks. D. In the Disk Management console, configure shadow copies. Answer: B Explanation: Consider using multipath I/O software: In a highly available storage fabric, you can deploy failover clusters with multiple host bus adapters by using multipath I/O software. This provides the highest level of redundancy and availability. For Windows Server 2008 R2, your multipath solution must be based on Microsoft Multipath I/O (MPIO). Your hardware vendor will usually supply an MPIO device-specific module (DSM) for your hardware, although Windows Server 2008 R2 includes one or more DSMs as part of the operating system. Multipath I/O Overview Applies To: Windows Server 2008 R2 Multipathing Support for High Availability Windows Server includes many enhancements for the connectivity of a computer running a Windows server-class operating system to storage area networking (SAN) devices. Among the enhancements enabling high availability for connecting Windows-based servers to SANs is integrated Multipath I/O (MPIO) support. Microsoft MPIO architecture supports iSCSI, Fibre Channel and serial attached storage (SAS) SAN connectivity by establishing multiple sessions or connections to the storage array. Multipathing solutions use redundant physical path components--adapters, cables, and switches--to create logical paths between the server and the storage device. In the event that one or more of these components fails, causing the path to fail, multipathing logic uses an alternate path for I/O so that applications can still access their data. Each network interface card (in the iSCSI case) or HBA should be connected by using redundant switch infrastructures to provide continued access to storage in the event of a failure in a storage fabric component. Failover times vary by storage vendor, and can be configured by using timers in the Microsoft iSCSI Software Initiator driver, or modifying the Fibre Channel host bus adapter driver parameter settings. New MPIO features in Windows Server 2008 include a Device Specific Module (DSM) designed to work with storage arrays that support the asymmetric logical unit access (ALUA) controller model (as defined in SPC-3), as well as storage arrays that follow the Active/Active controller model. Features of the included DSM The Microsoft DSM provides the following load balancing policies. Note that load balance policies are generally dependent on the controller model (ALUA or true Active/Active) of the storage array attached to Windows based computers. Failover No load balancing is performed. The application specifies a primary path and a set of standby paths. The primary path is used for processing device requests. If the primary path fails, one of the standby paths is used. Standby paths must be listed in decreasing order of preference (the most preferred path first). Failback Failback is the ability to dedicate I/O to a preferred path whenever it is functioning. If the preferred

path fails, I/O is directed to an alternate path until function is restored to the preferred path, but I/O automatically switches back to the preferred path when function is restored.

Round-robin The DSM uses all available paths for I/O in a balanced, round-robin fashion. Round-robin with a subset of paths The application specifies a set of paths to be used in a round-robin fashion, and a set of standby paths. The DSM uses paths from primary pool of paths for processing requests, as long as at least one of the paths is available. The DSM uses a standby path only when all primary paths fail. Standby paths must be listed in decreasing order of preference (most preferred path first). If one or more of the primary paths become available, DSM uses the standby paths in their order of preference. For example, given 4 paths--A, B, C, and D--A, B, and C are listed as primary paths, and D is standby path. The DSM chooses a path from A, B, and C in round-robin fashion as long as at least one of them is available. If all three fail, the DSM uses D, the standby path. If A, B, or C become available, DSM stops using D and switches to available paths among A, B, and C.

Dynamic Least Queue DepthThe DSM routes I/O to the path with the least number of outstanding requests.

Weighted PathThe application assigns weights to each path; the weight indicates the relative priority of a given path. The larger the number, the lower the priority. The DSM chooses the path that has the least weight from among the available paths. The Microsoft DSM preserves load balance settings even after the computer is restarted. When no policy has been set by a management application, the default policy that is used by the DSM is either Round Robin, when the storage controller follows the true Active/Active model, or simple failover in the case of storage controllers that support the SPC-3 ALUA model. With simple Failover, any one of the available paths can be used as the primary path, and remaining paths are used as standby paths.

QUESTION 122You have a Windows Server 2008 R2 Hyper-V server. You take periodic snapshots of your virtual machines (VMs) when the VMs are not running. You delete several snapshots from the snapshot tree of a VM. The .avhd files that are associated with the deleted snapshots are not deleted from the volume where the VHD files are stored. You need to ensure that the .avhd files are deleted. What should you do? A. Reset the VM. B. Pause the VM. C. Export the VM. D. Shutdown the VM. Answer: D Explanation: If you have deleted a snapshot while the VM is running then the snapshots will not be deleted until the VM is shutdown.

QUESTION 123You are using Microsoft System Center Virtual Machine Manager (VMM) 2008 R2 to perform a physical-to virtual (P2V) conversion of a Windows Server 2008 R2 server. You need to prepare the server for the P2V conversion. Which two actions should you perform on the server? (Each correct answer presents part of the solution. Choose two.) A. Run the Chkdsk utility. B. Perform a disk defragmentation. C. Stop the Volume Shadow Copy service. D. Convert the system partition to a dynamic disk. Answer: AB Explanation: How to Perform a P2V Conversion During a P2V conversion, disk images of the hard disks on the source computer are copied and formatted as virtual hard disks (.vhd files) for use in the new virtual machine. Before You Begin The following list includes tasks that you should perform before starting the P2V conversion: The first phase of a P2V conversion is to survey the hardware configuration of the source computer and make sure the patch cache contains all necessary drivers and system files to support the configuration. If any drivers are missing, you will get specific error messages indicating where to get the necessary drivers. Bad sectors on disk cannot be transferred during a P2V conversion. To avoid data loss, run a disk maintenance tool such as Chkdsk on the source computer to detect and correct any file system errors. To help minimize the time required for the imaging phase, perform a disk defragmentation on the source computer's hard drives. Also, ensure that you have a fast network connection between the source computer and the host. Use dynamic Virtual Hard Disks to conserve disk space. For example, if you convert 5 GB of data on a 40 GB hard drive, VMM will create a dynamically expanding VHD of 5 GB that can grow up to 40 GB. For offline P2V only: Install the Windows Automated Installation Kit (WAIK) on the VMM Server. To download WAIK, go to <http://go.microsoft.com/fwlink/?LinkId=86477>. Supply the most recent drivers. In the Convert Physical Server Wizard, supply storage and network drivers compatible with the hardware of the source machine to be converted. Use one of the following drivers, listed in order of priority: Windows Vista 32-Bit Windows XP 32-Bit Windows Server 2003 32-Bit Windows 2000 Server 32-Bit

QUESTION 124You install Windows Server 2008 R2 (Server Core Installation) on a server. You install the Hyper-V role and Windows PowerShell 2.0 on the server. When you attempt to run an iscsicli command, the command fails. You need to be able to immediately run the iscsicli command successfully. What should you do? A. Run the ocsetup MultiPathIo command. B. Run the sc config msiscsi start= auto command. C. Run the start-service msiscsi PowerShell cmdlet. D. Run the set-service msiscsi CstartupType auto PowerShell cmdlet. Answer: C Explanation: You can also use the command line to complete all actions required to configure the iSCSI Initiator. The command line is necessary when using Server Core, since it has no graphical user interface (GUI). Following are example commands that show how to enable and configure the iSCSI Initiator using the command line. First, you must enable the state of the iSCSI Initiator service and start the service using the SC command: 1. Set the iSCSI Initiator service to start automatically: sc \localhost config msiscsi start= auto 2. Start the iSCSI Initiator service: sc start msiscsi 3. Complete the remaining tasks using the iSCSI command-line interface (iscsicli): - u Add the target portal: iscsicli QAddTargetPortal <IP address of Portal>- u Add the target: iscsicli QAddTarget <iqn address of target>- u Log in to the target: iscsicli QloginTarget <iqn address of target>- u Make Login Persistent: iscsicli PersistentLoginTarget <iqn

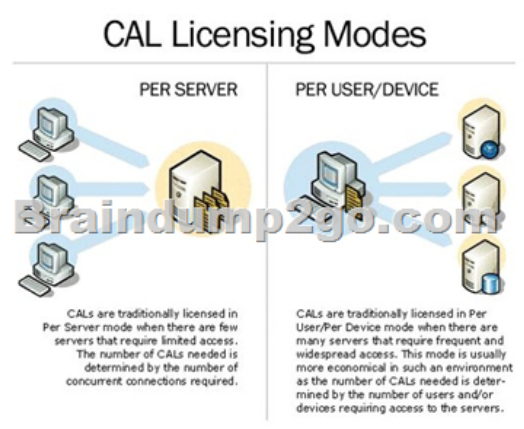
address of target> i T * * * * * 0- u Bind all persistent volumes:iscsicli BindPersistentVolumes4. Confirm some critical settings by using these two command lines:- iscsicli ListPersistentTargets- iscsicli ReportTargetMappingsStart-Service Applies To: Windows PowerShell 2.0Starts one or more stopped services.SyntaxStart-Service [-Name] <string[]> [-Exclude <string[]>] [-Include <string[]>] [-PassThru] [-Confirm] [-WhatIf][<CommonParameters>]Start-Service -DisplayName <string[]> [-Exclude <string[]>] [-Include <string[]>] [-PassThru] [-Confirm] [-WhatIf][<CommonParameters>] Start-Service [-InputObject <ServiceController[]>] [-Exclude <string[]>] [-Include <string[]>] [-PassThru] [-Confirm] [-WhatIf] [<CommonParameters>] DescriptionThe Start-Service cmdlet sends a start message to the Windows Service Controller for each of the specified services. If a service is already running, the message is ignored without error. You can specify the services by their service names or display names, or you can use the InputObject parameter to supply a service object representing the services that you want to start.

Configuring iSCSI Initiators in Windows 2008 setting up iSCSI initiators from the command line (cli). (It also gave me a reason to toy around in PowerShell (PS).)Microsoft makes iSCSI initiator software available for Windows 2000, Windows Server 2003, Windows XP, and is included natively for Windows Server 2008 and Windows Vista. Our host details for this are:HOSTs: redmond (initiator node), sunspot (target node) OSes: Windows Server 2008 Standard SP2 (redmond)Solaris 10 u8 (10/09 (sunspot)) PROMPTS: PS-redmond C:> (PS on redmond)cmd-redmond C:> (standard cli on redmond) sunspot [0] (sunspot) IP ADDRs: 10.0.136.25 (redmond), 10.0.136.12 (sunspot) To start, the iSCSI initiator service (MSiSCSI) must be running, though if this is the the first configuration of iSCSI devices, we'll likely receive one of the two messages below indicating that it is not:PS-redmond C:> iscsicli listtargetsMicrosoft iSCSI Initiator Version 6.0 Build 6000The Microsoft iSCSI initiator service has not been started. PS-redmond C:> iscsicliMicrosoft iSCSI Initiator Version 6.0 Build 6000Error getting node name: The interface is unknown. Use the following to configure MSiSCSI to auto-start at boot, start it, and verify that it is running in PS:PS-redmond C:> set-service msiscsi -startuptype automatic PS-redmond C:> start-service msiscsiPS-redmond C:> get-service msiscsiStatus Name DisplayName Running msiscsi Microsoft iSCSI Initiator ServiceTo do the same via the standard cli, use the following:cmd-redmond C:>sc config msiscsi start= auto[SC] ChangeServiceConfig SUCCESScmd-redmond C:>sc start msiscsiSERVICE_NAME: msiscsiTYPE : 20 WIN32_SHARE_PROCESSSTATE : 2 START_PENDING(NOT_STOPPABLE, NOT_PAUSABLE, IGNORES_SHUTDOWN) WIN32_EXIT_CODE : 0 (0x0)SERVICE_EXIT_CODE : 0 (0x0)CHECKPOINT : 0x0WAIT_HINT : 0x7d0PID: 1028FLAGS: cmd-redmond C:>sc query msiscsiSERVICE_NAME: msiscsiTYPE: 20 WIN32_SHARE_PROCESSSTATE: 4 RUNNING (STOPPABLE, NOT_PAUSABLE, ACCEPTS_SHUTDOWN)WIN32_EXIT_CODE : 0 (0x0)SERVICE_EXIT_CODE : 0 (0x0) CHECKPOINT: 0x0WAIT_HINT : 0x0c:UsersAdministrator>If you have Windows Firewall enabled, update it to enable the preconfigured iSCSI service rule:PS-redmond C:> netsh advfirewall firewall set rule "iSCSI Service (TCP-Out)" new enable=yes Updated 1 rule(s).Ok.Now we have MSiSCSI running and our firewall allows the initiator to establish connections to our target host. Since don't have any target hosts configured, 'iscsicli listtargetportals' below returns nothing:PS-redmond C:> iscsicli listtargetportalsMicrosoft iSCSI Initiator Version 6.0 Build 6000The operation completed successfully.Because I previously configured the target host to only allow known initiators to connect, we need to retrieve the iSCSI Node Name (INN) from 'iscsicli': PS-redmond C:> iscsicliMicrosoft iSCSI Initiator Version 6.0 Build 6000 [iqn.1991-05.com.microsoft:redmond] Enter command or C to exit PS-redmond C:> QUESTION 125You are configuring a virtual machine (VM) that is hosted on a Windows Server 2008 R2 Hyper-V server. The VM is currently in the Running state.You need to export the VM without loss of data.What are two possible first steps that you could perform to achieve this goal? (Each correct answer presents a complete solution. Choose two.) A. Save the VM.B. Pause the VM.C. Turn off the VM.D. Shut down the VM. Answer: AD QUESTION 126Your company has Hyper-V host servers located in datacenters named DataCenter1 and DataCenter2.You manage host servers and virtual machines (VMs) by using Microsoft System Center Virtual Machine Manager (VMM) 2008 R2.DataCenter1 has a library server named Library1.You cannot provision VMs in DataCenter2 by using Library1.You install a new library server named Library2 in DataCenter2.You need to provision new VMs in DataCenter2 by using Library2.You copy a VHD file from Library1 to Library2, and you refresh Library2.What should you do next? A. Refresh Library1.B. Index the VHD file on Library2.C. Clone DataCenter1s VMM template.D. Edit DataCenter1s VMM template to point to the VHD file in DataCenter2. Answer: C QUESTION 127You manage Hyper-V host servers and virtual machines (VMs) by using Microsoft System Center Virtual Machine Manager (VMM) 2008 R2.Testers are members of an AD security group named Test.You need to ensure that members of the Test group can create VMs on a specific host server by using the VMM Self-Service Portal.What should you do? A. In VMM, specify a template for new VMs created by members of the Test group.B. In VMM, create a Delegated Administrator user role and add the Test group to this role.C. In VMM, assign the Test group the Local Administrator permission for the specific host server.D. Install Hyper-V Manager on the client computer of each member of the Test group, and grant the Test group administrative privileges on the specific host server. Answer: A QUESTION 128Your network includes the servers shown in the following table.

You install an additional server named Server3 that runs Windows Server 2008 R2 Enterprise. You add the Remote Desktop Services (RDS) role, and you configure the Remote Desktop Session Host (RD Session Host) role service. You need to ensure that RDS client access licenses (RDS CALs) can be assigned to each Remote Desktop user. What should you do?

Server name	Operating system	Role service
Server 1	Windows Server 2008 Standard	Terminal Services
Server 2	Windows Server 2008 Enterprise	Terminal Services

- A. Add RDS CALs to Server1.
 - B. Specify the Remote Desktop Licensing (RD Licensing) mode on Server3.
 - C. Add the Remote Desktop Licensing (RD Licensing) role service to Server3.
 - D. Upgrade Server1 from Windows Server 2008 Standard to Windows Server 2008 R2 Enterprise.
- Answer: B
 Explanation: Server1 has only standard TS licensing and we have additional server (aka server3) then there is no need to upgrade or Add any additional service. (Eliminating A and D) Already RDS role is enabled (Eliminated C option as well)



The Windows Server 2008 R2 licensing model requires a server license for each running instance of the server software. (Remote Desktop Services is included). In addition a Windows Server Client Access License (CAL) is required to access the Windows Server. If you wish to utilize the RDS functionality of the Windows Server software, an incremental Remote Desktop Services Client Access License (RDS CAL) is required as well. They can be licensing on a Device or User CAL model.

QUESTION 129 You configure a new virtual machine (VM) on a Windows Server 2008 R2 Hyper-V failover cluster. You install the operating system on the VM from a media image. You install Microsoft System Center Operations Manager 2007 R2 in the environment. Microsoft System Center Virtual Machine Manager (VMM) 2008 R2 reports the VM status as Unsupported Cluster Configuration. You need to ensure that you can manage the VM by using VMM. What should you do?

- A. Detach the media image from the VM configuration.
- B. Place the VMs VHD on a Cluster Shared Volume (CSV).
- C. Implement Performance and Resource Optimization (PRO).
- D. Copy the media image to the same disk as the VM, and mount the ISO file.

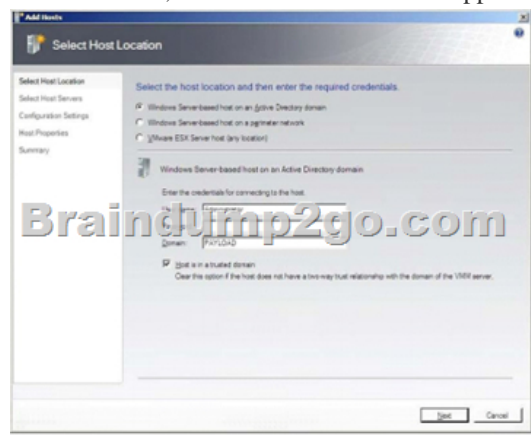
Answer: A
 Explanation: Any HAVMs that share a non-CSV LUN are imported into VMM with Unsupported Cluster Configuration status. To resolve this issue, use Failover Cluster Manager to reconfigure the virtual machines to have their own LUNs. Then, in the VMM Administrator Console, use the Repair action with the Ignore option to refresh each virtual machine's status in VMM.

In VMM2008R2, when you migrate a virtual machine into a cluster from a stand-alone host by using a SAN transfer, VMM checks all nodes in the cluster to ensure that each node can see the LUN and automatically creates a cluster disk resource for the LUN. Even though VMM automatically configures the cluster disk resource, it does not validate it. You must use the Validate a Configuration Wizard in Failover Cluster Management to validate the newly created cluster disk resource. To migrate a virtual machine out of a cluster to a stand-alone host, the virtual machine must be on a dedicated LUN that is not using CSV.

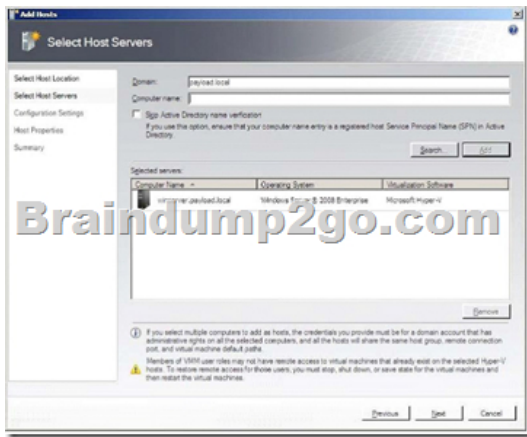
Troubleshoot "Unsupported Cluster Configuration" Status for a Highly Available Virtual Machine To view the reason that a HAVM is in an Unsupported Cluster Configuration state, display the Hardware Configuration tab of the Virtual Machine Properties dialog box. Then, in the Advanced settings, click Availability. If the virtual machine is in an Unsupported Cluster Configuration state, the Details area displays the error that placed the virtual machine in that state. The following situations can cause Unsupported Cluster Configuration status:

- The virtual machine is on a non-CSV LUN that contains more than one virtual machine. If you have configured highly available virtual machines in Hyper-V to share the same LUN, and the LUN is not on a clustered file system (CSV) volume, you must update the virtual machine configurations in Failover Cluster Management and Hyper-V so that each resides on its own unshared LUN.
- The virtual machine is using non-clustered storage. If the HAVM is stored on system drive C: or any disk that is not clustered, the virtual machine is placed in Unsupported Cluster Configuration state. To resolve this issue, ensure that all files and pass-through disks belonging to the virtual machine reside on clustered disks.

VMware HA VM is connected to a port group that does not exist on all nodes of the host cluster. On host clusters that VMM is managing, each port group must be configured on all ESX Server hosts in the cluster. If a virtual machine is configured with a port group that is not common to all hosts, the virtual machine has Unsupported Cluster Configuration status. You have detach the media image to be fully supported by VMM. If media is attached then migration may fail. QUESTION 130 Your company's network includes an Active Directory Domain Services (AD DS) domain. You manage Hyper-V servers by using Microsoft System Center Virtual Machine Manager (VMM) 2008 R2. You install Windows Server 2008 R2 Datacenter (Server Core Installation) on 100 new servers, and you add the servers to the domain. You need to add the Hyper-V role to the 100 new servers. You must accomplish this goal by using the least amount of administrative effort. What should you do? A. Run the Add-WindowsFeature RSAT-Hyper-V PowerShell cmdlet. B. In Server Manager, use the Add Roles Wizard to add the Hyper-V role. C. In the VMM Administrator Console, use the Add Hosts Wizard to individually add each new server to VMM. D. In the VMM Administrator Console, use the Add Hosts Wizard to simultaneously add all 100 new servers to VMM. Answer: D Explanation: Adding Hosts to the VMM Administrator Console When the VMM Administrator Console is run for the first time after installation, it does not, by default, have any hosts assigned to it. In this context, the term host is used to refer to servers running virtual machines using Hyper-V, Virtual Server VMware ESX Server virtualization technology. Since very little can be achieved using the console until some hosts are added, this is one of the first tasks to be performed. Hosts are added to the console using the Hosts view, which is selected by clicking on the Hosts option in the list of views located in the pane in the bottom left hand corner of the console window. Once the Hosts view is displayed, hosts may be added by clicking on the Add Host link in the Actions pane, or selecting the Actions -> Virtual Machine Manager -> Add Host menu option. Once selected, the Add Host wizard will appear displaying the Select Host Locations screen as illustrated in the following figure:



The purpose of this screen is to specify where the host is located in terms of the logical network infrastructure. A variety of different host types may be added to the console, these being a Windows Server host running Hyper-V which is a member of an Active Directory domain, a Windows Server host running Hyper-V which is not a member of an Active Directory domain (also referred to as a perimeter network host), or a host running VMware ESX Server (regardless of whether or not it is an Active Directory domain member). If a host on a perimeter network is specified, the host must have had the VMM Agent component installed on it before it can be added to the VMM Server. This installation process also involves the creation of an encryption key which will also need to be provided during the host addition process. For details on installing the VMM Agent on a perimeter host refer to the chapter entitled Installing VMM 2008 Components. After selecting the host location and type, enter the user name and password credentials of an account on the host which may be used to gain access and click Next to proceed to the Select Host Servers screen. Having defined the location of the hosts to be added, the purpose of the Select Host Servers screen is to allow selection of the specific hosts to be added to the VMM Server. To add hosts, enter the name of Active Directory domain of which the host is a member followed by the computer name. If in doubt as to the name of the computer to be added, the Search button may be used to search the specified domain for systems running either Virtual Server or Hyper-V technology. Once a list of servers has been generated, one or more hosts may be selected and added to the console. Alternatively, if you know the name of the host to be added, simply enter the name and click the Add button:



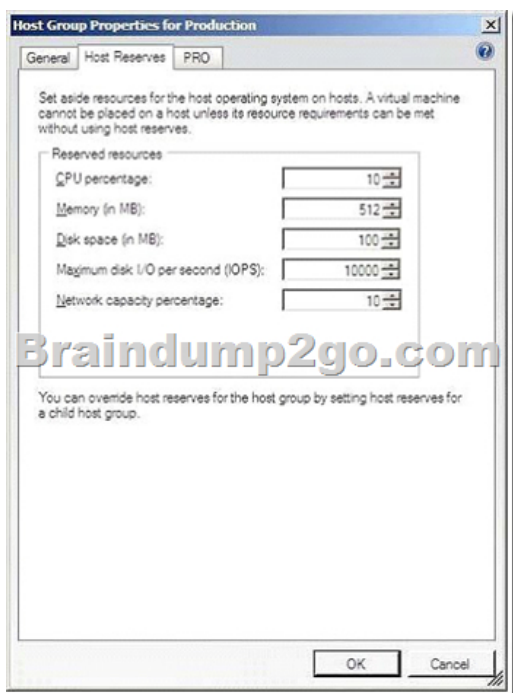
Once the required hosts have been added, click on the **Next** button to proceed to the **Configuration Settings** screen. This screen is used to define which group of hosts the machine is to be assigned to. By default, only the **All Hosts** group is pre-configured within the VMM Administrator Console. In addition, if the host is currently managed by a different VMM Server than the one to which the VMM Administrator Console is currently connected, select the option to **Reassociate host with this Virtual Machine Manager Server** to associate the host with the currently connected VMM Server. Clicking **Next** displays the **Host Settings** screen where a number of paths suitable for storing virtual machine files on the host may be defined. If no paths are specified, the default location will be used for all virtual machines created on the host using the console. Note that the console will not create any paths if they do not already exist on the host. These paths must be manually created before they can be used to store virtual machines. In addition, a remote connection port may be specified to allow remote connections to the host using the **Virtual Machine Connection** tool. Once the host settings are defined, click **Next** and review the information on the **Summary** screen. In previous chapters we have mentioned that VMM 2008 sits on top of Windows PowerShell and that any operations performed are converted into a Windows PowerShell script and executed. To prove this, click on the **View script** button to display the PowerShell script which will be executed to add the host to the VMM Server. Assuming all is correct in the summary, click on **Add hosts** to add the hosts to the VMM Server. Once the addition is complete, the new host will appear in the list of hosts in the main console window.

Configuring Host Groups

In the previous section a host was added to the **All Hosts** group of the VMM Server. In addition to the **All Hosts** group, other groups may be created and existing groups removed to aid in the administration of large and complex virtualization deployments. Host groups are configured hierarchically, with the **All Hosts** group at the top of the tree and other sub-groups nested beneath it. Each sub-group may, in turn, have its own sub-groups allowing multiple layers of group nesting. For example, **All Hosts** may have a sub-group for all hosts located in California. The California subgroup may then be configured to have sub-groups of its own for each city in which hosts are located (San Jose, Palo Alto, San Francisco etc). To add a new host group, ensure that the VMM Administrator Console is displaying the **Hosts** view, right click on the **All Hosts** item in the **Hosts** pane in the top left hand corner of the window and select **New host group** from the menu. A new host group entry will appear with the default name **New host group** highlighted. Enter a new name and press enter to complete the creation process. To remove an existing group, right click on the group name in the **Hosts** pane and select **Remove** from the popup menu. To move a host from one group to another, select the host from the list of hosts and click on the **Move to host group** link in the **Actions** pane. Navigate through the tree of host groups to find the target group and click **OK** to initiate the move. Similarly, to add an existing host to a group, select the host group from the list, click on **Add host** from the **Actions** pane and use the wizard as described above to complete the process.

Setting Host Reserves

Host Reserves define how much of a host's resources are to be reserved for the host operating system. Once these reserves are configured, a virtual machine cannot be deployed on that host if doing so would require the use of those reserved resources. The host resources that may be reserved are as follows: CPU Percentage, Memory, Disk Space, Maximum Disk I/O Per Second (IOPS), Network Capacity, Percentage. Host reserves are specified on a host group basis. In addition, the group reserve settings may also be overridden on a per host basis. To specify the host group reserve settings, right click on the host group name in the **Hosts** pane, select **Properties** from the menu and click the **Host Reserve** tab in the **Host Group Properties** dialog as illustrated in the following figure:



In order to override the group host reserve settings, right click on the host in the list, select Properties and click on Reserves in the resulting dialog. 100% 70-659 Complete Success & Money Back Guarantee! By utilizing Braindump2go high quality Microsoft 70-659 Exam Dumps Products, You can surely pass 70-659 certification 100%! Braindump2go also offers 100% money back guarantee to individuals in case they fail to pass Microsoft 70-659 in one attempt.

TS: Windows Server 2008 R2, Server Virtualization:



Product Description Exam Number/Code: 70-659

Exam Number/Code: 70-659

"TS: Windows Server 2008 R2, Server Virtualization", also known as Microsoft Certified Technology Specialist (MCTS) Certification. With the complete collection of questions and answers assembled to take you through 161 Q&As to your 70-659 Exam preparation resources, you will cover every field and category in Microsoft MCTS your successful Microsoft Certification.

Questions and Answers : 161 Q&As

Updated: Dec 22, 2015

~~\$420.00~~ **\$99.99**

[PDF DEMO](#)

[CHECK OUT](#)

Printable PDF **Premium VCE + VCE Simulator**

Free Demo Download

Braindump2go offers free demo for 70-659 exam (TS: Windows Server Virtualization). You can check out the interface, question quality and exams before you decide to buy it.

FREE DOWNLOAD: NEW UPDATED 70-659 PDF Dumps & 70-659 VCE Dumps from Braindump2go:
<http://www.braindump2go.com/70-659.html> (161 Q&As)