

[New 70-537 Dumps Braindump2go 70-537 Exam Dumps PDF 92Q Free Offer [Q34-Q44]

2018-10-29 Braindump2go 70-537 Exam Dumps with PDF and VCE New Updated Today! Following are some new 70-537 Real Exam Questions: 1. | 2018 Latest 70-537 Exam Dumps (PDF & VCE) 92Q&As

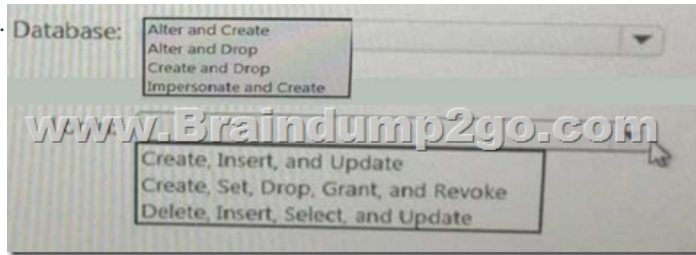
Download: <https://www.braindump2go.com/70-537.html> | 2018 Latest 70-537 Exam Questions & Answers

Download: <https://drive.google.com/drive/folders/1Ca7dKgVwY7mxl8BaUz-s4YT1zeRYpIBW?usp=sharing>
Question: 34 You manage an Azure Stack integrated system. You plan to query the usage data of Azure Stack. Which three parameters can you use in the query? Each correct answer presents a complete solution. Note: select: Each correct selection is worth one point.

A. usageEndTime B. meterId C. reportedStartTime D. usageStartTime E. aggregationGranularity F. reportedEndTime

Answer: ACF
Question: 35 You have an Azure Stack integrated system that hosts several tenants. You delete a storage account that uses a large amount of data. You discover that the storage account continues to use disk space on the system. You need to ensure that the disk space is available to the tenants as quickly as possible. What should you do first?
A. From the Azure Stack administrator portal, set Retention period for deleted storage accounts (days) to 0.
B. From the Azure Stack administrator portal, click Reclaim space.
C. From PowerShell, run the out-Default cmdlet.
D. From PowerShell, migrate the blob containers in the storage account to a new share.

Answer: A
Question: 36 HOTSPOT You implement a MySQL resource provider on an Azure Stack integrated system. You install a new server named Server1 that hosts MySQL. You need to add Server1 as a hosting server to the resource provider. Which MySQL privileges should you assign to the account used to access Server1? To answer, select the appropriate options in the answer area.

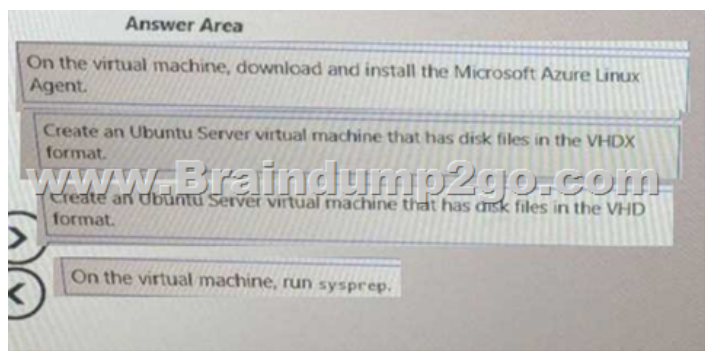


Answer: Database: create, drop Login: create, set, drop, grant, revoke
Question: 37 You have an Azure Stack integrated system that uses Microsoft Azure Active Directory (Azure AD) for authentication. You download and extract the Azure App Service files. You need to configure the system to support the deployment of Node.js applications and Azure functions. What should you do before you configure the resource provider?
A. Install certificates. Register a service principal. Deploy and configure a Microsoft SQL server. Create a relying party trust.
B. Install certificates. Deploy and configure a file server. Deploy and configure a Microsoft SQL server. Create an Azure AD application.
C. Install certificates. Register a service principal. Deploy and configure a file server. Create a relying party in.
D. Register a service principal. Deploy and configure a file server. Implement and configure a MySQL resource provider. Configure the Azure functions.
Answer: B Incorrect Answers: A, C: App Service on Azure Stack does not require a service principal or a relying party trust, but does require Microsoft SQL server for the App Service databases. D: App Service on Azure Stack requires certificates and Microsoft SQL server for the App Service databases.
References:
<https://docs.microsoft.com/en-us/azure/azure-stack/azure-stack-app-service-before-you-get-started>

Question: 38 DRAG DROP You manage an Azure Stack integrated system. You plan to make an Ubuntu Server image available to the Azure Stack tenants. You need to prepare the custom Ubuntu Server image. Which four actions should you perform in sequence before you upload the Image to Azure Stack?



Answer:



Question: 39 You successfully implement an App Service resource provider on an Azure Stack integrated system. You need to provide tenants with the ability to provision WordPress websites from the Marketplace. Which additional Azure Stack service should you deploy?
A. a MySQL resource provider
B. Cloud Foundry
C. a Key Vault resource provider
D. blockchain
Answer: A
Explanation: WordPress requires MySQL for its database store.

Question: 40 You manage an Azure Stack integrated system that is accessed by using the URLs of <https://adminportal.east.azurestack.fabrikam.com> and <https://portal.east.azurestack.fabrikam.com>. The fabrikam.com domain contains a Linux server named Server1 that has MySQL installed. You implement a MySQL resource provider on the system. You need to ensure that tenants can provision MySQL database. What should you do next?
A. From <https://portal.east.azurestack.fabrikam.com>, download the MySQL connector binary.
B. From <https://adminportal.east.azurestack.fabrikam.com>, add a MySQL hosting server.
C. From <https://portal.east.azurestack.fabrikam.com>, add a MySQL hosting server.
D. From <https://adminportal.east.azurestack.fabrikam.com>, download the MySQL connector binary
Answer: C
Explanation: Hosting servers that are installed on Azure Stack integrated systems must be created from a tenant subscription. They cannot be created from the default provider subscription.

References: <https://docs.microsoft.com/en-us/azure/azure-stack/azure-stack-mysql-resource-provider-deploy>

Question: 41 You have an Azure Stack integrated system that has a file server running on a virtual machine used by the App Service resource provider. You need to increase the amount of memory on the file server. Which command should you run?
A. az vm resize
B. az apservice plan update
C. az vm update
D. az apservice plan create
Answer: A

Question: 42 DRAG DROP You have an Azure Stack Development Kit deployment that uses a Microsoft Azure Active Directory (Azure AD) domain named contoso.onmicrosoft.com for authentication. You need to install the App Service resource provider. Which names should you use to configure the App Service cloud?



Answer:



Question: 43 NOTE: This question is part of a series of questions that present the same scenario. Each question in the series contains a unique solution that might meet the stated goals. Some question sets might have more than one correct solution, while others might not have a correct solution. After you answer a question in this section, you will NOT be able to return to it. As a result, these questions will not appear in the review screen. You have an Azure Stack integrated system that runs in a connected environment. You need to recommend an interval for installing Microsoft software update packages to Azure Stack. The solution must ensure that you can receive Microsoft support. Solution: You recommend that Microsoft software updates be installed monthly. Does this meet the goal?
A. Yes
B. No
Answer: A
Explanation: For your Azure Stack deployment to remain in support, it must run the most recently released update version or run either of the two preceding update versions. Microsoft will release update packages for Azure Stack integrated systems on a regular cadence that will typically fall on the fourth Tuesday of every month. Thus to remain in support you must be running one of the last three update versions and, as an update version is released every month, you

need to install updates at least every three months.References:

<https://docs.microsoft.com/en-us/azure/azure-stack/azure-stack-servicing-policy>

https://docs.microsoft.com/en-us/azure/azure-stack/azure-stack-updates**Question: 44** NOTE: This question is part of a series of questions that present the same scenario. Each question in the series contains a unique solution that might meet the stated goals. Some question sets might have more than one correct solution, while others might not have a correct solution.After you answer a question in this section, you will NOT be able to return to it. As a result, these questions will not appear in the review screen.You have an Azure Stack integrated system that runs in a connected environment.You need to recommend an interval for installing Microsoft software update packages to Azure Stack. The solution must ensure that you can receive Microsoft support.Solution: You recommend that Microsoft software updates be installed every six months. Does this meet the goal?A. YesB. NoAnswer: B Explanation:For your Azure Stack deployment to remain in support, it must run the most recently released update version or run either of the two preceding update versions.Microsoft will release update packages for Azure Stack integrated systems on a regular cadence that will typically fall on the fourth Tuesday of every month.Thus to remain in support you must be running one of the last three update versions and, as an update version is released every month, you need to install updates at least every three months.

References:<https://docs.microsoft.com/en-us/azure/azure-stack/azure-stack-servicing-policy>

<https://docs.microsoft.com/en-us/azure/azure-stack/azure-stack-updates>!!!RECOMMEND!!!1.|2018 Latest 70-537 Exam Dumps (PDF & VCE) 92Q&As Download:<https://www.braindump2go.com/70-537.html>2.|2018 Latest 70-537 Study Guide Video: YouTube Video: [YouTube.com/watch?v=LruGEda-ZfM](https://www.youtube.com/watch?v=LruGEda-ZfM)