

## [Updated 70-743 Dumps!100% Success-Braindump2go 70-743 Dumps 267Q Instant Download[Q115-Q125

2018/10/30 Braindump2go 70-743 Exam Dumps with PDF and VCE New Updated Today! Following are some new 70-743 Real Exam Questions:1.2018 Latest 70-743 Exam Dumps (PDF & VCE) 267Q&As

Download:<https://www.braindump2go.com/70-743.html>2.2018 Latest 70-743 Exam Questions & Answers

Download:<https://drive.google.com/drive/folders/1Ca7dKgVwY7mxl8BaUz-s4YT1zeRYpIBW?usp=sharing>QUESTION 115Note:

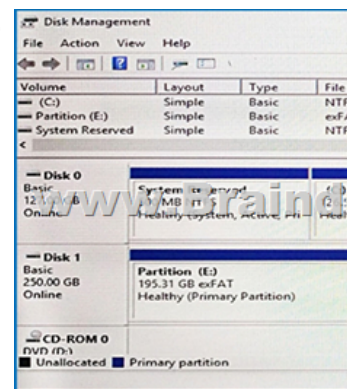
This question is part of a series of questions that present the same scenario. Each question in the series contains a unique solution. Determine whether the solution meets the stated goals.Your network contains an Active Directory domain named contoso.com.The domain contains a DNS server named Server1. All client computers run Windows 10.On Server1, you have the following zone configuration.

ZoneName	ZoneType	IsAutoCreated	IsDsIntegrated	IsReverseLookupZone	IsSigned
_msdcs.contoso.com	Primary	False	True	False	False
8.in-addr.arpa	Primary	True	False	True	False
127.in-addr.arpa	Primary	True	False	True	False
255.in-addr.arpa	Primary	True	False	True	False
adatum.com	Primary	False	True	False	False
contoso.com	Primary	False	True	False	False
fabrikam.com	Primary	False	True	False	True
TrustAnchors	Primary	False	True	False	False

You need to ensure that all of the client computers in the domain perform DNSSEC validation for the fabrikam.com namespace. Solution: From Windows PowerShell on Server1, you run the Add-DnsServerTrustAnchor cmdlet.Does this meet the goal?A. Yes B. NoAnswer: BExplanation:The Add-DnsServerTrustAnchor command adds a trust anchor to a DNS server. A trust anchor (or trust "point") is a public cryptographic key for a signed zone. Trust anchors must be configured on every non-authoritative DNS server that will attempt to validate DNS data. Trust Anchors have no direct relation to DSSEC validation.References:

<https://technet.microsoft.com/en-us/library/jj649932.aspx>

[https://technet.microsoft.com/en-us/library/dn593672\(v=ws.11\).aspx](https://technet.microsoft.com/en-us/library/dn593672(v=ws.11).aspx)QUESTION 116You have a server named Server1 that runs Windows Server 2016.The disk configuration for Server1 is shown in the exhibit. (Click the Exhibit button.)



You add Server1 to a cluster.You need to ensure that you can use Disk 1 for Storage Spaces Direct.What should you do first?A. Set Disk 1 to offline.B. Convert Partition (E:) to ReFS.C. Convert Disk 1 to a dynamic disk.D. Delete Partition (E:).Answer: D Explanation:The disks used in Storage Spaces Direct cannot contain existing partitions.QUESTION 117You create a Nano server image named Nano1.vhdx by using the New-NanoServerImage cmdlet.You attach Nano1.vhdx to a Generation 1 virtual machine named Nano1.When you start Nano1, you get the following error message: "Boot failure. Reboot and select proper Boot device or Insert Boot Media in selected Boot device" You need to successfully start Nano server.What should you do?A. Attach Nano1.vhdx to a SCSI controller.B. Recreate Nano1 as a Generation 2 virtual machine.C. Increase the memory of Nano1 to 512 Mb.D. Modify the BIOS settings of Nano1.Answer: BExplanation:A Generation 1 VM cannot boot from a vhdx disk; only a Generation 2 VM can boot from an vhdx disk.QUESTION 118You have a Hyper-V host named Server1 that runs Windows Server 2016.The host has two virtual machines (VMs) named VM1 and VM2.On the Hyper-V host, you create two virtual disks named Disk1 and Disk2. You plan to create a test environment for Storage Spaces Direct.You need to configure the VMs to connect to the virtual disks.What should you use?A. An iSCSI targetB. A virtual SCSI controllerC. A virtual fibre channel adapterD. A virtual IDE controllerAnswer: BExplanation:

<https://blogs.msdn.microsoft.com/clustering/2015/05/27/testing-storage-spaces-direct-using-windows-server-2016-virtual-machines/>QUESTION 119You have two servers named Server1 and Server2 that run Windows Server 2016.You plan to implement

Storage Replica to replicate the contents of volumes on Server1 to Server2. You need to ensure that the replication traffic between the servers is limited to a maximum of 100 Mbps. Which cmdlet should you run?  
 A. Set-NetUDPSetting  
 B. New-StorageQosPolicy  
 C. Set-SmbBandwidthLimit  
 D. Set-NetTCPSetting  
**Answer: C**  
**QUESTION 120** You have a Hyper-V host named Server1 that runs Windows Server 2016. Server1 hosts a virtual machine named VM1. VM1 is in a workgroup. VM1 is currently in a running state. You need to create 10 copies of VM1 on Server1 in the least amount of time possible. Which cmdlets should you use?  
 A. Stop-VM, and then Import-VM  
 B. Export-VM, and then Import-VM  
 C. Checkpoint-VM, and then New-VM  
 D. Copy-VMFile, and then New-VM  
**Answer: B**  
**QUESTION 121** You deploy two servers that run Windows Server 2016. You install the Failover Clustering feature on both servers. You need to create a workgroup cluster. What should you do?  
 A. Create matching local administrative accounts on both of the servers. Assign the same primary DNS suffix to both of the servers. Run the New-Cluster cmdlet and specify an administrative access point of None.  
 B. Configure both of the server to be in a workgroup named Workgroup. Configure the Cluster Service to log on as Network Service. Run the New-Cluster cmdlet and specify an administrative access point of DNS.  
 C. Create matching local administrative accounts on both of the servers. Assign the same primary DNS suffix to both of the servers. Run the New-Cluster cmdlet and specify an administrative access point of DNS.  
 D. Configure both of the server to be in a workgroup named Workgroup. Configure the Cluster Service to log on as Network Service. Run the New-Cluster cmdlet and specify an administrative access point of None.  
**Answer: D**  
**QUESTION 122** You have a server named Server1 that runs Windows Server 2016. You need to configure Server1 as a Web Application Proxy. Which server role or role service should you install on Server1?  
 A. Web Server (IIS)  
 B. Network Policy and Access Services  
 C. Direct Access and VPN (RAS)  
 D. Active Directory Federation Services  
 E. Remote Access  
**Answer: E**  
**QUESTION 123** You have a server named Server1 that runs Windows Server 2016. You need to install the DNS Server role on Server1. What should you run?  
 A. the Install-Package cmdlet  
 B. the setup.exe command  
 C. the dnscmd.exe command  
 D. the Enable-WindowsOptionalFeature cmdlet  
**Answer: D**  
**QUESTION 124** Note: This question is part of a series of questions that present the same scenario. Each question in the series contains a unique solution that might meet the stated goals. Some question sets might have more than one correct solution, while others might not have a correct solution. After your answer a question in this section, you will NOT be able to return to it. As a result, these questions will not appear in the review screen. Your network contains an Active Directory forest named contoso.com. You need to identify which server is the schema master. Solution: From Windows PowerShell, you run Get-ADDomainController-Discover -Service 2. Does this meet the goal?  
 A. Yes  
 B. No  
**Answer: B**  
**Explanation:**  
<https://blogs.technet.microsoft.com/mempson/2007/11/08/how-to-find-out-who-has-your-fsmo-roles/>  
**QUESTION 125** Note: This question is part of a series of questions that use the same scenario. For your convenience, the scenario is repeated in each question. Each question presents a different goal and answer choices, but the text of the scenario is exactly the same in each question in this series. Start of repeated scenario Your network contains an Active Directory domain named contoso.com. The functional level of the forest and the domain is Windows Server 2008 R2. All servers in the domain run Windows Server 2016 Standard. The domain contains 300 client computers that run either Windows 8.1 or Windows 10. The domain contains nine servers that are configured as shown in the following table.

Server name	Configuration	Planned changes
Server1	Domain controller	None
Server2	File server	Run Failover Clustering and Storage Spaces Direct
Server3	File server	Run Failover Clustering and Storage Spaces Direct
Server5	Hyper-V host	None
Server6	Member server	Run Active Directory Federation Services (AD FS)
VM1	Virtual machine hosted on Server 5	None
VM2	Virtual machine hosted on Server 5	None
VM3	Virtual machine hosted on Server 5	None

The virtual machines are configured as follows:- Each virtual machine has one virtual network adapter.- VM1 and VM2 are part of a Network Load Balancing (NLB) cluster.- All of the servers on the network can communicate with all of the virtual machines. End of repeated scenario. You create a new NLB cluster that contains VM3. You need to ensure that VM2 can remain in the original cluster and be added to the new cluster. What should you do first?  
 A. Add a new virtual network adapter to VM2.  
 B. Install the Web Application Proxy server role on VM2 and VM3.  
 C. Change the cluster operation mode.  
 D. Modify the default port rule.  
**Answer: A**!!!RECOMMEND!!!  
 1. [2018 Latest 70-743 Exam Dumps (PDF & VCE) 267Q&As  
 Download: <https://www.braindump2go.com/70-743.html>  
 2. [2018 Latest 70-743 Study Guide Video: YouTube Video: [YouTube.com/watch?v=C17F08M6dTQ](https://www.youtube.com/watch?v=C17F08M6dTQ)